

e X O T I C

LUXURY LINE COATING



by Gian Carlo Sagasti

A stylized, handwritten signature in white ink, appearing to read 'G. Sagasti'.

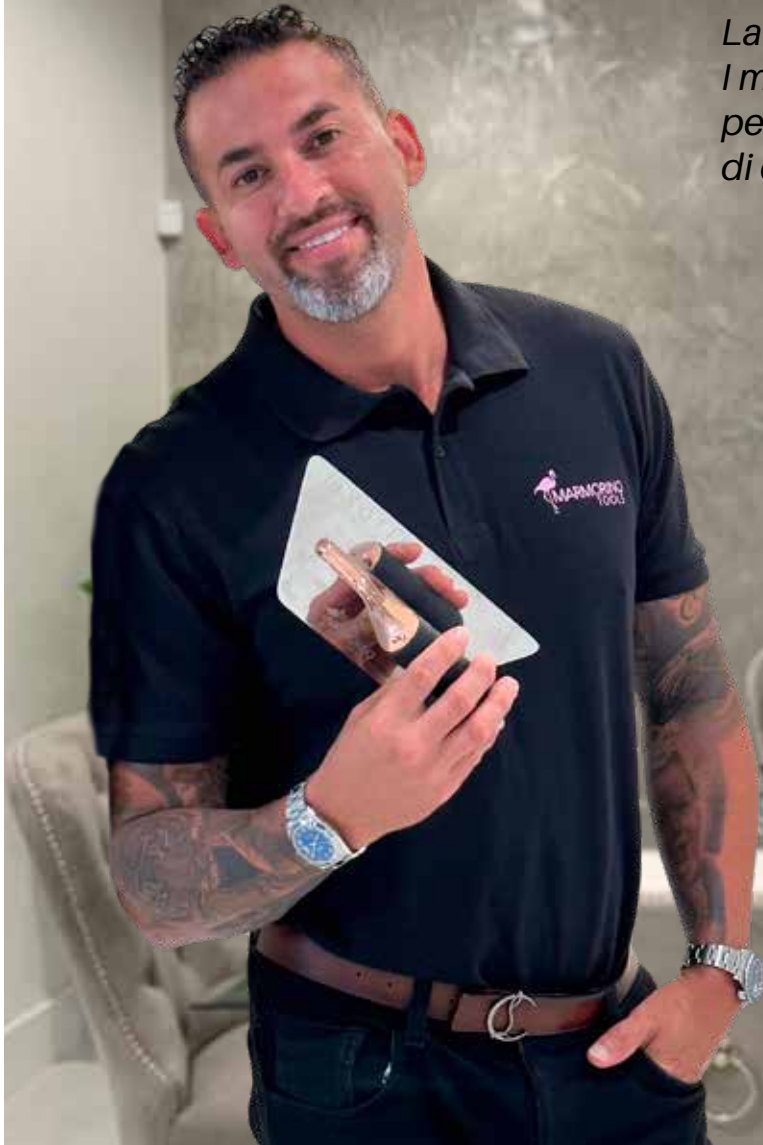


PRODOTTO ITALIANO  
ITALIAN PRODUCT

**My personal choice of luxury coatings.  
Best products to achieve the best results  
for your projects, through elegant shades  
of amazing quality.**

*La mia scelta personale di rivestimenti di lusso.  
I migliori prodotti per ottenere i migliori risultati  
per i tuoi progetti, attraverso tonalità eleganti  
di qualità sorprendente.*

Gian Carlo Sagasti



# INDEX

#sexywalls

PRODUCTS • PRODOTTI	P.
MY PRIMER	5
GRASSELLO CLASSICO	7
GRASSELLO "BLING-BLING"	9
MARMORINO CARRARA	11
IL MATERICO	13
MARMORINO SAND	15
MARMORINO SENSORY	17
VENETIAN WAX	19
NATURAL WAX - BRILL WAX - MATTE WAX - FRENCH SOAP	20
METAL FINISHING / NUANCE	21
TONER SYSTEM	22-34
MERCHANDISING	35-36

MADE IN ITALY





## MY PRIMER

#sexywalls

Proper primer is the base of an artwork.  
 MY PRIMER is water-based primer containing extra-fine quartz and satisfies all features for a smooth progress of your work, coats after coats, up to the final result.  
 It is conceived for indoor and outdoor applications and made for lime-based products.  
 It grants adhesions and insulation to all kind of surfaces.

*Un primer appropriato è la base di un'opera d'arte.  
 MY PRIMER è un primer a base d'acqua contenente quarzo extra-fine e soddisfa tutte le caratteristiche per un regolare svolgimento del tuo lavoro, mano dopo mano, fino al risultato finale.  
 È concepito per applicazioni interne ed esterne e realizzato per prodotti a base di calce.  
 Garantisce adesione e isolamento a tutti i tipi di superfici.*

MADE IN ITALY



# GRASSELLO CLASSICO

#sexywalls



Superclassic Venetian stucco,  
the best-known covering in the world.  
The magic of slaked lime together with your skills  
will renew traditions in contemporary styles.

*Stucco veneziano superclassico,  
il rivestimento più conosciuto al mondo.  
La magia della calce unita alla tua abilità  
rinnoverà le tradizioni in stili contemporanei.*

MADE IN ITALY



# GRASSELLO "BLING-BLING"

#sexywalls



Super shiny results with GRASSELLO "BLING-BLING" when you really need to enhance luxury and classy interiors. Effortlessly it can be applied just like GRASSELLO CLASSICO, but the final result will be definitely more shiny.

*Risultati super brillanti con GRASSELLO "BLING-BLING" quando hai davvero bisogno di esaltare interni lussuosi e di classe. Può essere applicato senza sforzo proprio come GRASSELLO CLASSICO, ma il risultato finale sarà sicuramente più lucido.*

MADE IN ITALY

# MARMORINO CARRARA

#sexywalls

Slaked lime, addicted with Carrara marble powder, gives life to another timeless material, traditional but always pointing to novelty and improvements. It can be applied according to trowel spreading technique, and it will astonish you for the silky and natural final effect.

*La calce spenta, addizionata con polvere di marmo di Carrara, dà vita a un altro materiale senza tempo, tradizionale ma sempre orientato a novità e miglioramenti. Si applica con la tecnica della stesura a frattone, e vi stupirà per l'effetto finale setoso e naturale.*



MADE IN ITALY



# IL MATERICO

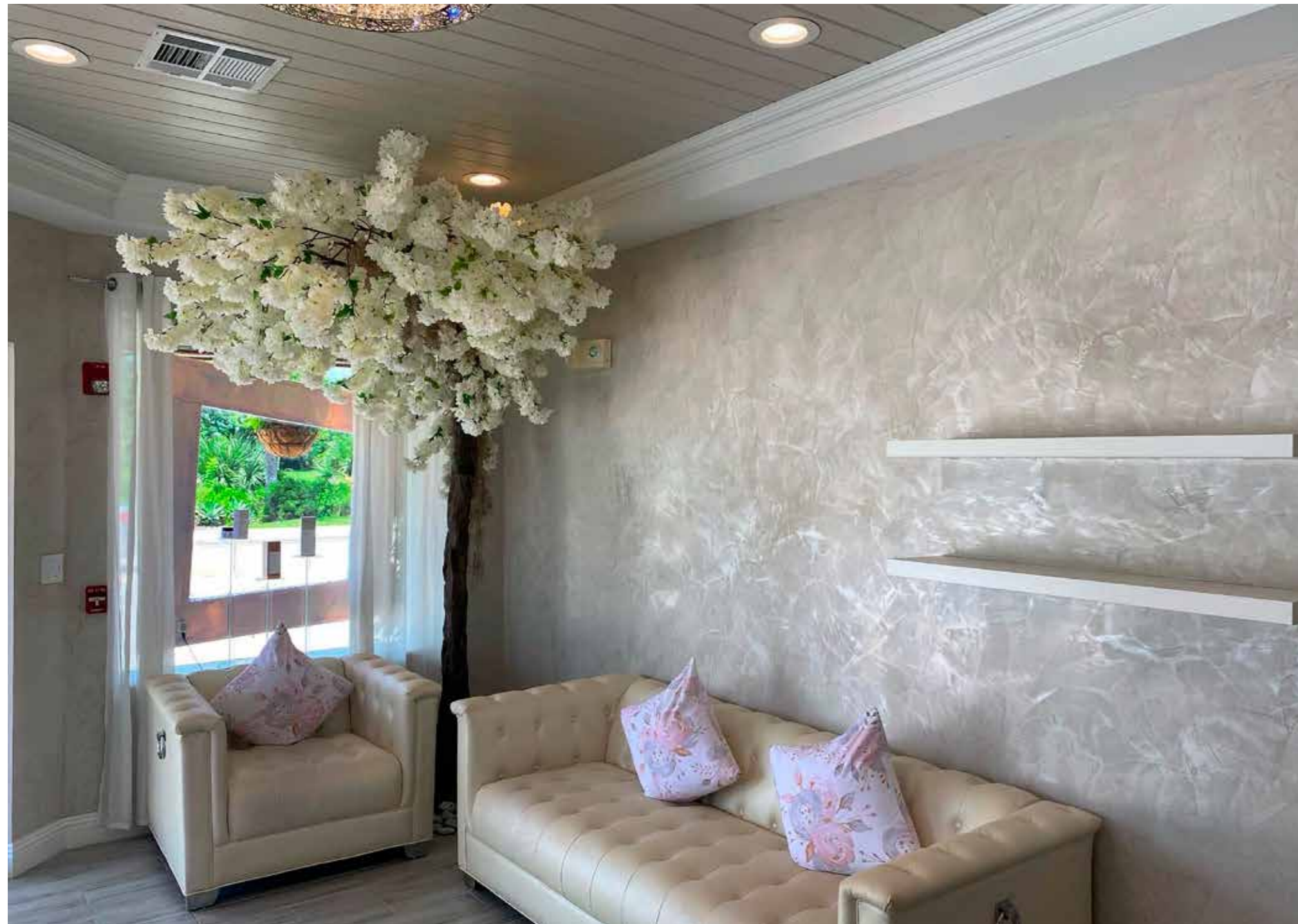
#sexywalls



Versatility is the fundamental characteristic for IL MATERICO. With a single coat you will be able to create extraordinary textured effects, or more traditional looking walls.

*La versatilità è la caratteristica fondamentale di IL MATERICO. Con una sola mano potrai creare straordinari effetti materici, o pareti dall'aspetto più tradizionale.*

MADE IN ITALY



# MARMORINO SAND

#sexywalls



MARMORINO SAND is a lime-based plaster coat for smoothing and finishing with a satin effect for interiors. It allows to achieve "cloudy" aesthetic effects, with soft and vibrant shades or totally even and uniform surfaces to remind the traditional and historical "Marmorino Veneziano".

*MARMORINO SAND è un intonaco a base di calce per la rasatura e la finitura ad effetto satinato per interni. Permette di ottenere effetti estetici "nuvolati", con tonalità tenui e vivaci oppure superfici totalmente uniformi e uniformi che ricordano il tradizionale e storico "Marmorino Veneziano".*

MADE IN ITALY



# MARMORINO SENSORY

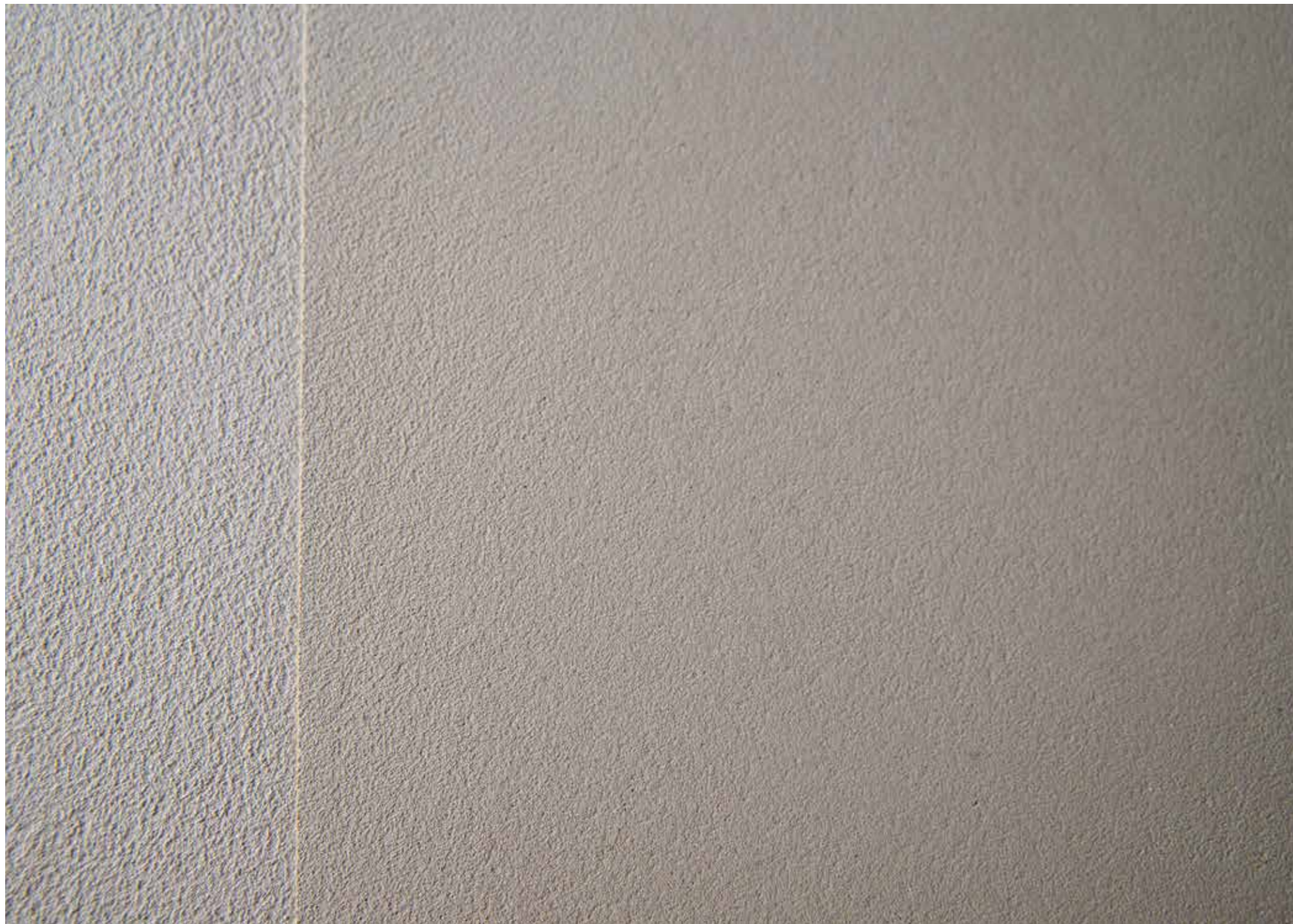
#sexywalls



MARMORINO SENSORY offers to you a completely new experience in coatings. You can achieve an unexpected visual rough looking, together with a soft and velvet touch under your fingers.

*MARMORINO SENSORY ti offre un'esperienza completamente nuova nei rivestimenti. Puoi ottenere un aspetto ruvido visivo inaspettato, insieme a un tocco morbido e vellutato sotto le tue dita.*

MADE IN ITALY





# VENETIAN WAX GOLD-SILVER

#sexywalls



Add something unique to your finishings with VENETIAN WAX, an exclusive finishing wax specifically made for Venetian Plaster walls. You can grant the "wow-effect" to your artwork thanks to an amazing iridescent effect that embellishes the walls. VENETIAN WAX is available in gold or silver.

*Aggiungi qualcosa di unico alle tue finiture con VENETIAN WAX, un'esclusiva cera di finitura realizzata appositamente per pareti in stucco veneziano. Puoi conferire l'"effetto wow" alla tua opera d'arte grazie a uno straordinario effetto iridescente che impreziosisce le pareti. VENETIAN WAX è disponibile in oro o argento.*

MADE IN ITALY

# WAXES and FRENCH SOAP

Protect your indoor walls with these indispensable water based WAXES. Three versions available:  
*Proteggi le tue pareti interne con queste indispensabili CERE a base d'acqua. Tre versioni disponibili:*



**NATURAL WAX** is composed by vegetal wax, pure Marseille soap and special additives. In addition to protection from surface dirt, without compromising breathability, it gives a natural shiny final effect.  
*NATURAL WAX è composto da cera vegetale, sapone di Marsiglia puro e additivi speciali. Oltre a proteggere dallo sporco superficiale, senza compromettere la traspirabilità, dona un effetto finale lucido naturale.*

**MATT WAX** contains a matting agent and other specific additives. It protects the surface without altering the original aspect of the application.  
*MATT WAX contiene un agente opacizzante e altri additivi specifici. Protegge la superficie senza alterare l'aspetto originale dell'applicazione.*

**BRILL WAX** enhances the brightness and the glossiness of the finishing.  
*BRILL WAX esalta la brillantezza e la lucentezza della finitura.*

Protect your surfaces with **FRENCH SOAP**. It is an eco-friendly, water-based, anti-dirt product suitable for indoor coatings. It confers a pleasant silk-touch to the surface and it grants protection without altering the breath-through properties of lime-based coatings.

*Proteggi le tue superfici con FRENCH SOAP. È un prodotto ecologico, a base d'acqua, antispurco, adatto per rivestimenti interni. Conferisce un piacevole tocco setoso alla superficie e garantisce protezione senza alterare le proprietà traspiranti dei rivestimenti a base di calce.*



MADE IN ITALY

# METAL FINISHING

It is a metallic water-based decorative finish, suitable for lime-based plasters. METAL FINISHING is available in **Gold, Silver, Copper** and **Bronze** color. It may be used in different layers or combined, to create impressive effects.

*È una finitura decorativa metallizzata a base d'acqua, adatta per intonaci a base di calce. METAL FINISHING è disponibile nei colori Oro, Argento, Rame e Bronzo. Può essere utilizzata in strati diversi o combinata, per creare effetti di grande effetto.*



# NUANCE

It is a water-based decorative finishing, conceived for lime plaster walls. It enhances the texture and highlights the lights and shades on the applied material.

*È una finitura decorativa a base d'acqua, concepita per pareti intonacate a calce. Esalta la texture e mette in risalto i chiaroscuri del materiale applicato.*



MADE IN ITALY

# TONER SYSTEM • BE CREATIVE

To achieve high level artistic results, EXOTIC LINE COATING offers to you a new coloring system based on only 4 colorants (red, yellow, blue and black): by mixing these four colorants, it is possible to obtain a virtually infinite number of tints. This catalogue shows 94 colors referred to Grassetto Classico, but they are valid also for the other lime-based products in white. These colors are made with organic components and are light-sensitive. Following the formula for each tint you need, just add the proper quantities of basic colors using the syringe and the dropper according to the instructions. **The formulas refer to 24 kg of product.**



12.5 ml syringe  
siringa

5 ml syringe  
siringa

dropper  
contagocce



#sexywalls

## exo\_041

toner • gr • ml • drops

18 g | 14 ml + 12 drops

11 g + 19 drops | 9 ml + 18 drops

3 g + 2 drops | 2 ml + 12 drops

6 g + 2 drops | 4 ml + 24 drops

CHOOSE BETWEEN gr | ml  
ACCORDING TO YOUR PREFERENCES

SCEGLI TRA gr | ml  
IN BASE ALLE TUE PREFERENZE

ADD THE INDICATED QUANTITY OF THE TONER  
EXPRESSED IN GRAMS OR MILLILITERS, ADD REQUESTED DROPS  
TO OBTAIN THE DESIRED FINAL TINT

AGGIUNGERE LA QUANTITÀ INDICATA DI TONER ESPRESSA  
IN GRAMMI O MILLITRI, AGGIUNGERE LE GOCCE RICHIESTE  
PER OTTENERE LA TINTA FINALE DESIDERATA

Per ottenere risultati artistici di alto livello, EXOTIC LINE COATING ti offre un nuovo sistema di colorazione basato su soli 4 coloranti (rosso, giallo, blu e nero): miscelando questi quattro coloranti, è possibile ottenere un numero virtualmente infinito di tinte. Questo catalogo mostra 94 colori riferiti al Grassetto Classico, ma sono validi anche per gli altri prodotti a base di calce in bianco. Questi colori sono realizzati con componenti organici e sono fotosensibili. Seguendo la formula per ogni tinta di cui hai bisogno, basta aggiungere le giuste quantità di colori base utilizzando la siringa e il contagocce secondo le istruzioni.

**Le formule si riferiscono a 24 kg di prodotto.**

IT'S UP TO YOU, NOW! • ORA TOCCA A TE!



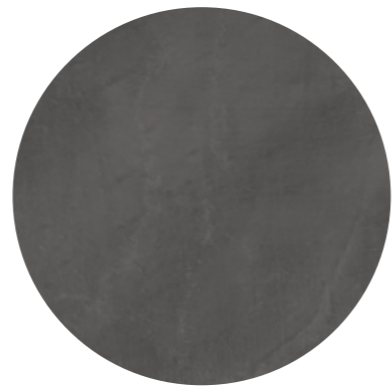
**exo\_001**

**BASIC  
WHITE**



**exo\_002**

614 g + 9 | 476 ml + 8



**exo\_003**

153 g + 14 | 119 ml



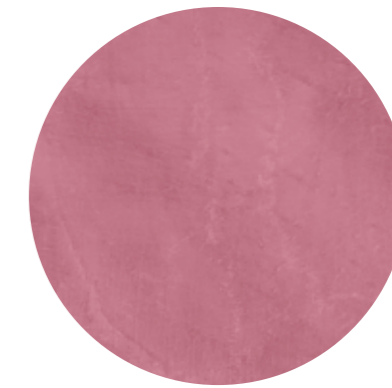
**exo\_133**

21



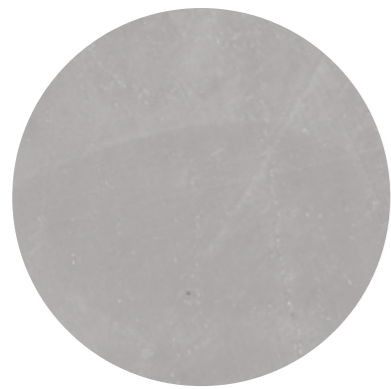
**exo\_034**

498 g | 415 ml  
13 g + 12 | 11 ml  
48 g | 37 ml + 24



**exo\_035**

138 g | 115 ml  
11 g + 17 | 9 ml + 15  
12 g + 14 | 10 ml



**exo\_004**

22 g + 12 | 17 ml + 13



**exo\_005**

2 g | 1 ml + 19



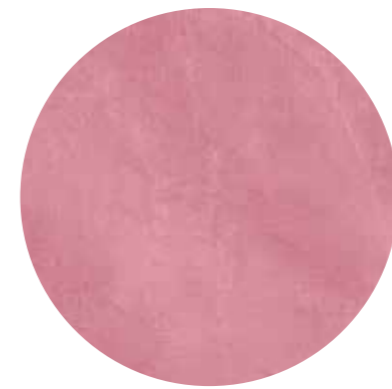
**exo\_006**

1 g + 5 | 1 ml



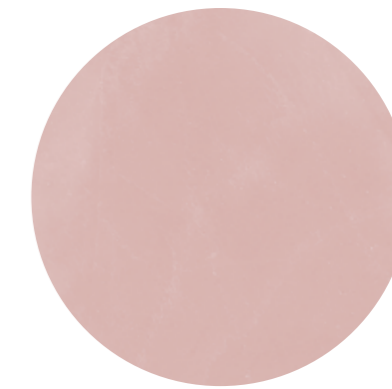
**exo\_135**

7



**exo\_036**

54 g | 45 ml  
6 g | 4 ml + 26  
6 g | 4 ml + 22



**exo\_043**

4 g + 5 | 3 ml + 15  
4 g + 12 | 3 ml + 20  
21 | 21  
3 g + 14 | 2 ml + 24



**exo\_007**

18



**exo\_009**

14



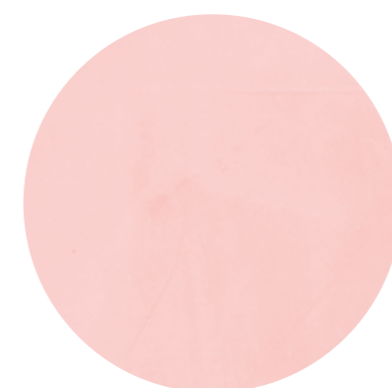
**exo\_134**

10



**exo\_054**

12 g | 10 ml  
12 g + 7 | 10 ml  
9 g + 14 | 7 ml + 13



**exo\_058**

4 g + 12 | 3 ml + 22  
3 g | 2 ml + 13  
1 g + 5 | 1 ml



**exo\_047**

192 g | 160 ml  
99 g | 80 ml + 15  
45 g | 34 ml + 26

printed colors are indicative

printed colors are indicative



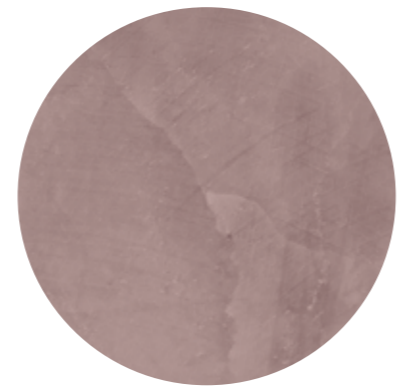
**exo\_048**

30 g | 25 ml  
16 g+ 20 | 13 ml + 20  
6 g+ 14 | 5 ml + 4



**exo\_056**

6 g | 4 ml + 26  
5 g+ 22 | 4 ml + 24  
3 g | 2 ml + 10



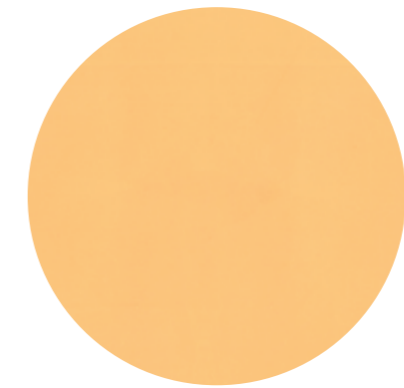
**exo\_041**

26 g+ 10 | 22 ml  
19 g+ 12 | 15 ml + 25  
4 g+ 19 | 3 ml + 23  
23 g+ 9 | 18 ml + 4



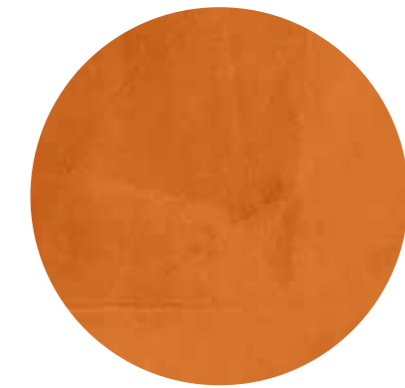
**exo\_055**

234 g | 195 ml  
246 g | 200 ml  
39 g | 30 ml + 7



**exo\_086**

3 g+ 22 | 3 ml + 5



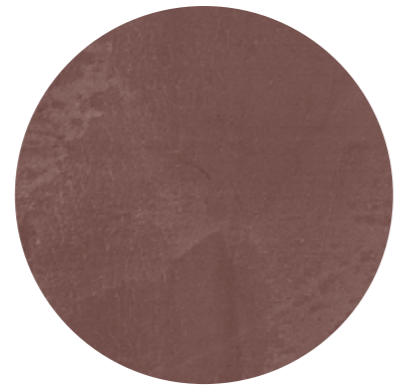
**exo\_073**

66 g | 55 ml  
519 g+ 15 | 422 ml + 13  
6 g | 4 ml + 19



**exo\_046**

504 g | 420 ml  
330 g | 268 ml + 9  
105 g | 81 ml + 12



**exo\_050**

129 g | 107 ml + 15  
90 g | 73 ml + 5  
33 g | 26 ml  
48 g | 37 ml + 6



**exo\_033**

21 g | 17 ml + 15  
22 g + 12 | 18 ml + 9



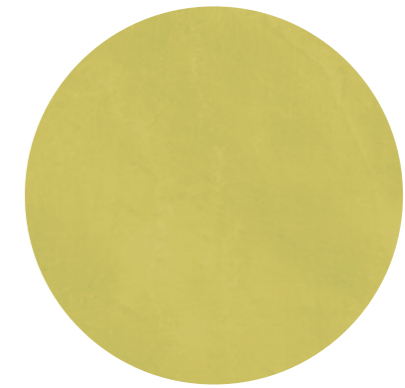
**exo\_075**

3 g+ 15 | 3 ml  
29 g + 10 | 23 ml + 27



**exo\_103**

30 g | 25 ml  
450 g | 365 ml + 25  
57 g | 44 ml + 26



**exo\_104**

7 g+ 12 | 6 ml + 7  
127 g+ 12 | 103 ml + 20  
12 g | 9 ml + 13



**exo\_052**

390 g | 325 ml  
294 g | 239 ml  
198 g | 153 ml + 15



**exo\_053**

72 g | 60 ml  
64 g+ 20 | 53 ml  
36 g | 27 ml + 27



**exo\_042**

7 g+ 12 | 6 ml + 7  
7 g+ 12 | 6 ml + 3  
2 g+ 9 | 1 ml + 27  
9 g | 7 ml



**exo\_105**

1 g+ 5 | 1 ml  
64 g + 23 | 52 ml + 24  
4 g + 19 | 3 ml + 23  
1g+ 19 | 1 ml+ 12



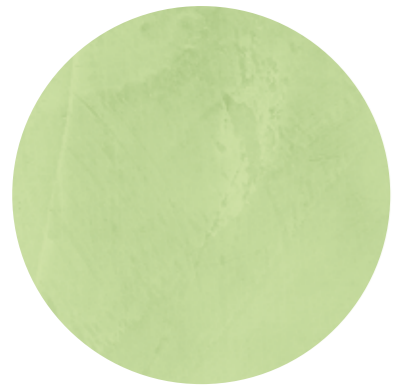
**exo\_100**

465 g | 378 ml  
111 g | 87 ml + 12



**exo\_101**

140 g | 113 ml + 27  
31 g+ 5 | 27 ml + 17



**exo\_102**

27 g + 7 | 22 ml + 6  
6 g + 21 | 5 ml + 13



**exo\_091**

607 g + 20 | 494 ml + 4  
28 g + 12 | 22 ml + 13



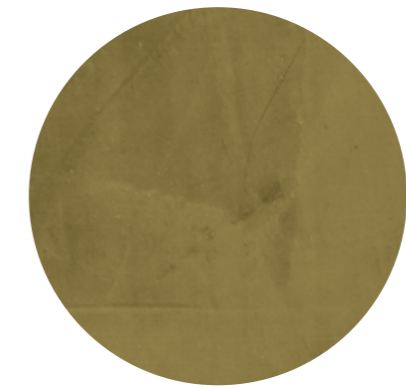
**exo\_092**

155 g | 126 ml + 3  
9 g + 21 | 7 ml + 24



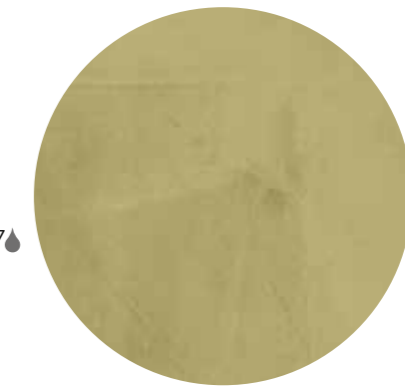
**exo\_099**

2 g | 1 ml + 21  
7 | 7



**exo\_118**

54 g | 45 ml  
472 g + 5 | 383 ml + 27  
49 g + 19 | 39 ml + 6  
9 g | 7 ml



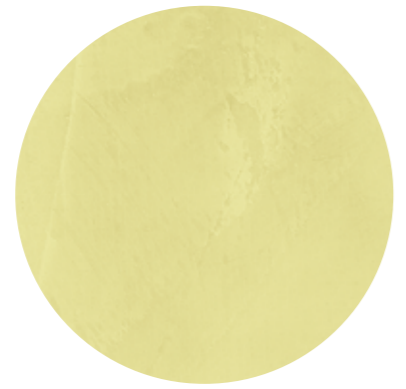
**exo\_119**

15 g + 22 | 13 ml + 7  
118 g + 5 | 96 ml + 3  
22 g + 12 | 17 ml + 22



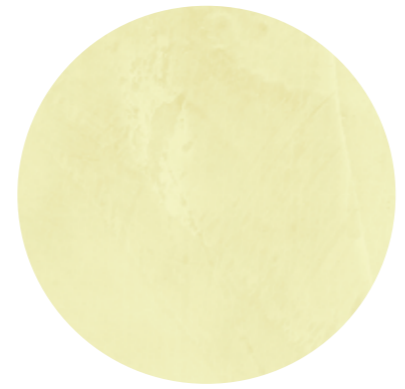
**exo\_093**

33 g + 15 | 27 ml + 10  
1 g + 19 | 1 ml + 13



**exo\_094**

15 | 15  
37 g + 5 | 30 ml + 7  
3 g + 14 | 2 ml + 25



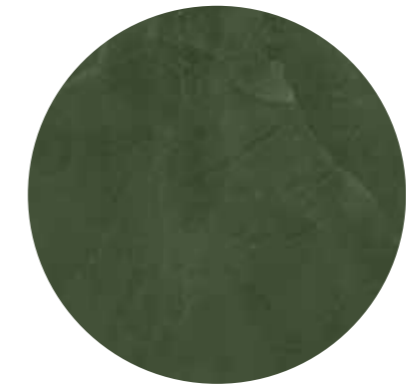
**exo\_095**

17 g | 13 ml + 27  
1 g + 19 | 1 ml + 13



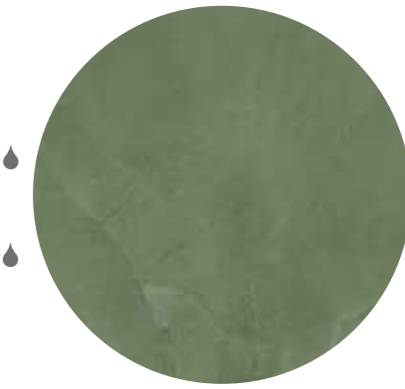
**exo\_120**

22 | 22  
15 g | 12 ml + 6  
2 g | 1 ml + 19



**exo\_109**

312 g + 22 | 254 ml + 12  
124 g + 19 | 98 ml + 8  
165 g + 21 | 128 ml + 18



**exo\_110**

84 g | 68 ml + 9  
32 g + 17 | 25 ml + 22  
45 g | 34 ml + 26



**exo\_096**

5 g + 17 | 4 ml + 19  
14 | 14



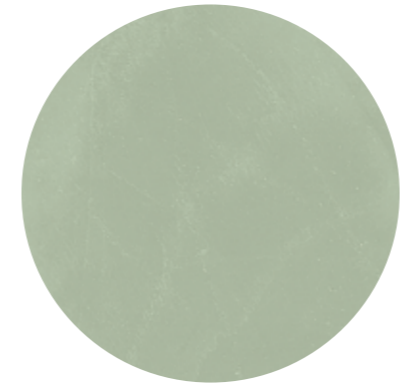
**exo\_097**

7 g + 5 | 5 ml + 25  
2 g + 9 | 1 ml + 27



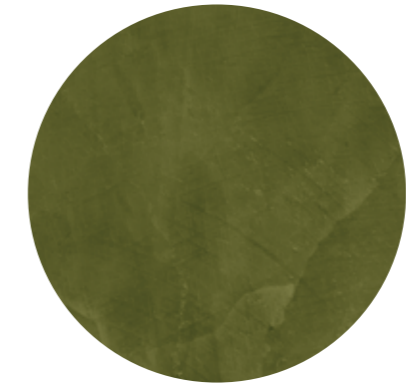
**exo\_098**

3 g + 22 | 3 ml + 5  
14 | 14



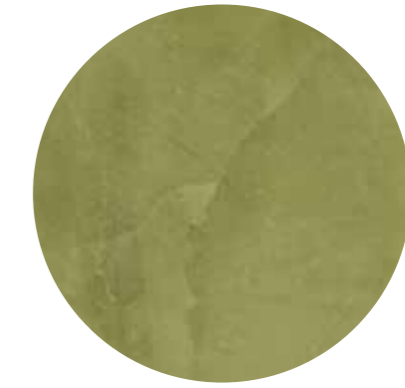
**exo\_111**

18 g | 14 ml + 19  
9 g | 7 ml + 3  
9 g | 7 ml



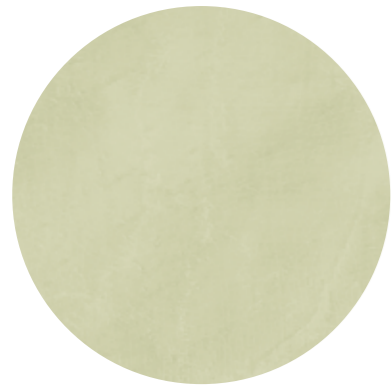
**exo\_106**

442 g + 20 | 360 ml  
56 g | 44 ml + 5  
96 g | 74 ml + 13

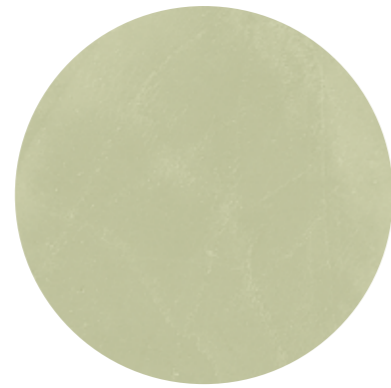


**exo\_107**

129 g | 104 ml + 26  
14 g + 9 | 11 ml + 10  
28 g + 5 | 21 ml + 26



**exo\_108**  
 11 g + 10 | 9 ml + 8  
 1 g + 12 | 1 ml + 5  
 3 g + 7 | 2 ml + 17



**exo\_112**  
 29 g + 17 | 24 ml + 4  
 3 g + 21 | 3 ml + 2  
 7 g + 12 | 5 ml + 24



**exo\_113**  
 6 g + 22 | 5 ml + 18  
 18 | 18  
 1 g + 12 | 1 ml + 5



**exo\_115**  
 3 g | 2 ml + 13  
 1 g + 12 | 1 ml + 5  
 1 g + 12 | 1 ml + 5



**exo\_116**  
 2 g + 10 | 2 ml  
 21 | 21  
 21 | 21



**exo\_117**  
 18  
 9  
 9



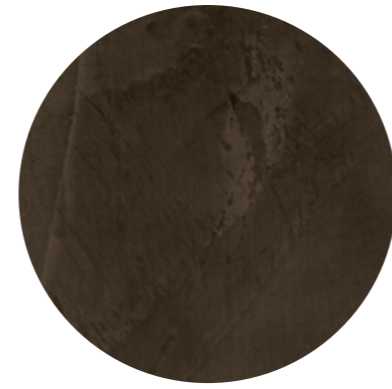
**exo\_127**  
 271 g + 12 | 220 ml + 22  
 249 g + 14 | 196 ml + 16  
 86 g | 66 ml + 22



**exo\_128**  
 66 g | 53 ml + 20  
 60 g | 47 ml + 7  
 18 g | 14 ml



**exo\_129**  
 11 g + 20 | 9 ml + 18  
 12 g + 11 | 9 ml + 25  
 3 g | 2 ml + 11



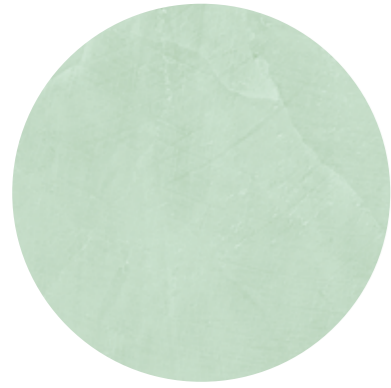
**exo\_121**  
 120 g | 100 ml  
 312 g + 22 | 254 ml + 12  
 294 g | 227 ml + 27



**exo\_123**  
 15 g | 12 ml + 15  
 88 g + 12 | 72 ml  
 36 g + 21 | 28 ml + 18



**exo\_125**  
 22 | 22  
 9 g | 7 ml + 10  
 3 g + 7 | 2 ml + 17



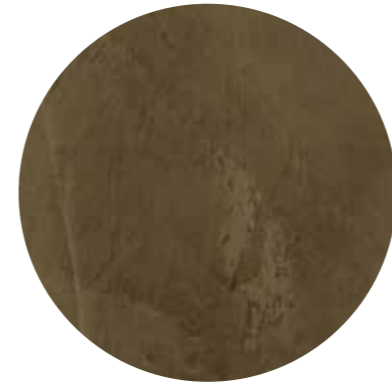
**exo\_130**  
 7 g + 20 | 6 ml + 10  
 6 g + 21 | 5 ml + 13  
 1 g + 19 | 1 ml + 12



**exo\_131**  
 2 g + 10 | 2 ml  
 2 g + 9 | 1 ml + 27  
 15 | 15



**exo\_132**  
 22  
 18  
 6



**exo\_122**  
 87 g | 72 ml + 15  
 369 g | 300 ml  
 177 g | 137 ml + 6



**exo\_124**  
 2 g + 10 | 2 ml  
 18 g + 7 | 14 ml + 26  
 6 g | 4 ml + 19



**exo\_088**  
 2 g + 10 | 2 ml  
 7 | 7

printed colors are indicative

printed colors are indicative



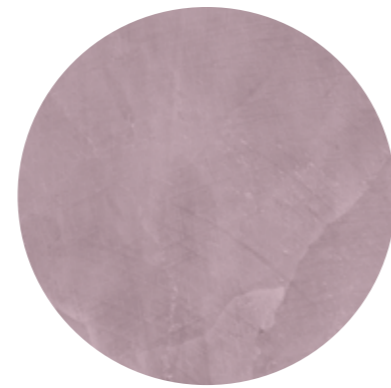
**exo\_037**

264 g | 220 ml  
51 g | 41 ml+ 14  
135 g | 106 ml+ 9



**exo\_038**

99 g | 82 ml+ 15  
19 g + 12 | 15 ml + 25  
39 g | 30 ml+ 21



**exo\_040**

37 g + 12 | 31 ml+ 7  
15 g + 7 | 12 ml+ 13  
16 g + 19 | 13 ml+ 7



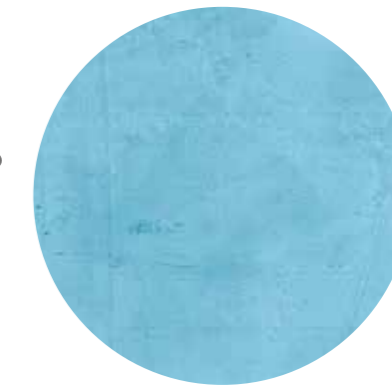
**exo\_139**

41 g + 8 | 33 ml + 18  
567 g + 20 | 447 ml+ 4  
12 g + 7 | 9 ml + 16



**exo\_140**

11 g + 20 | 19 ml + 18  
150 g | 118 ml+ 3  
3 g | 2 ml + 11



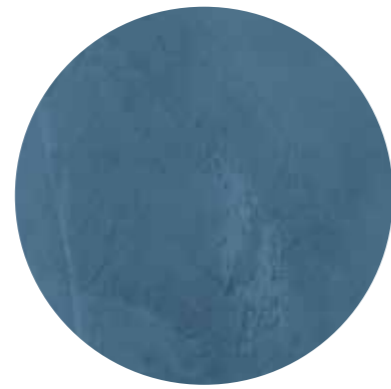
**exo\_141**

3 g | 2 ml + 13  
39 g | 30 ml+ 21  
7 | 7



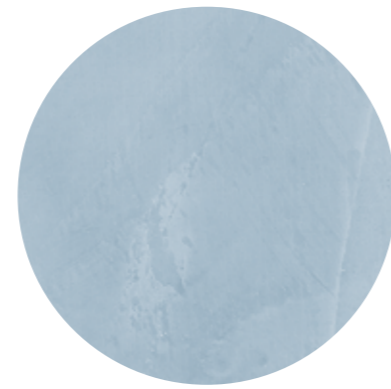
**exo\_136**

120 g | 100 ml  
418 g + 5 | 329 ml+ 9  
79 g + 19 | 61 ml+ 26



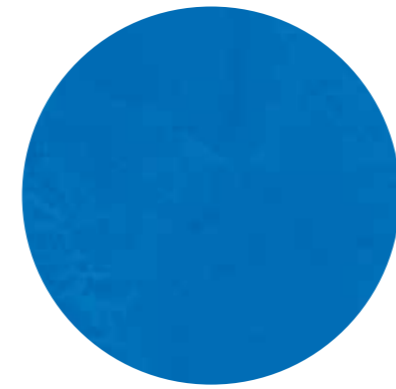
**exo\_137**

24 g | 20 ml  
169 g + 19 | 77 ml  
48 g | 37 ml+ 6



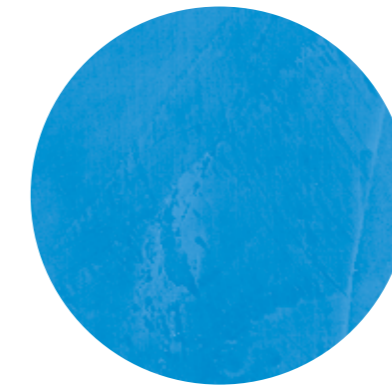
**exo\_138**

15 g | 11 ml + 24  
6 g | 4 ml + 19



**exo\_148**

624 g | 491 ml+ 10



**exo\_149**

156 g | 122 ml+ 25



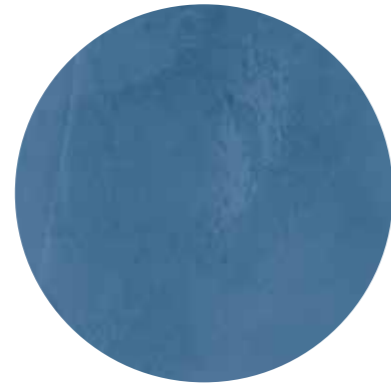
**exo\_150**

21 g | 16 ml+ 16  
14 | 14  
1 g + 12 | 1 ml+ 7



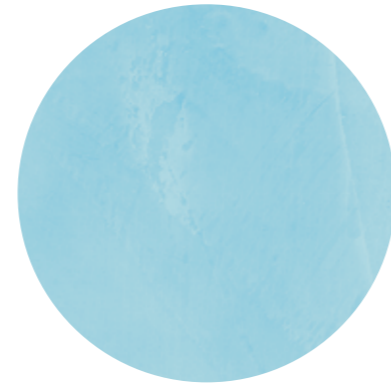
**exo\_145**

600 g | 472 ml+ 13  
33 g | 25 ml + 17



**exo\_146**

24 g | 20 ml  
111 g | 87 ml+ 12  
16 g + 12 | 12 ml + 24



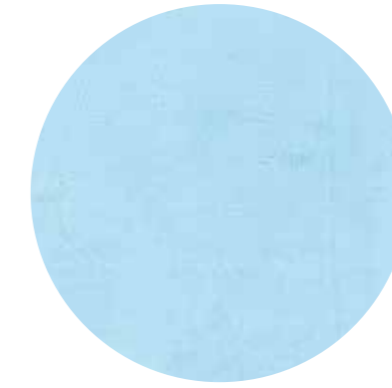
**exo\_147**

2 g + 10 | 2 ml  
18 g | 14 ml + 5  
7 | 7



**exo\_142**

15 g + 14 | 12 ml + 8



**exo\_143**

9 g | 7 ml + 3  
7 | 7



**exo\_144**

2 g | 1 ml+ 19

printed colors are indicative

printed colors are indicative



**exo\_151**

7 g+ 12 | 5 ml + 27

1 g +5 | 1 ml



**exo\_152**

3 g | 3 ml + 21

14 | 14



**exo\_089**

2 g | 1 ml + 21



**exo\_090**

22



printed colors are indicative

# MERCHANDISING

A complete set of proper tools for our merchandising:  
always distinguishing about luxury, glamour and classy living.  
They are essential to show the high quality of the coating materials.  
*Un set completo di strumenti adatti al nostro merchandising:  
sempre distintivi per lusso, glamour e vita di classe.  
Sono essenziali per mostrare l'alta qualità dei materiali di rivestimento.*

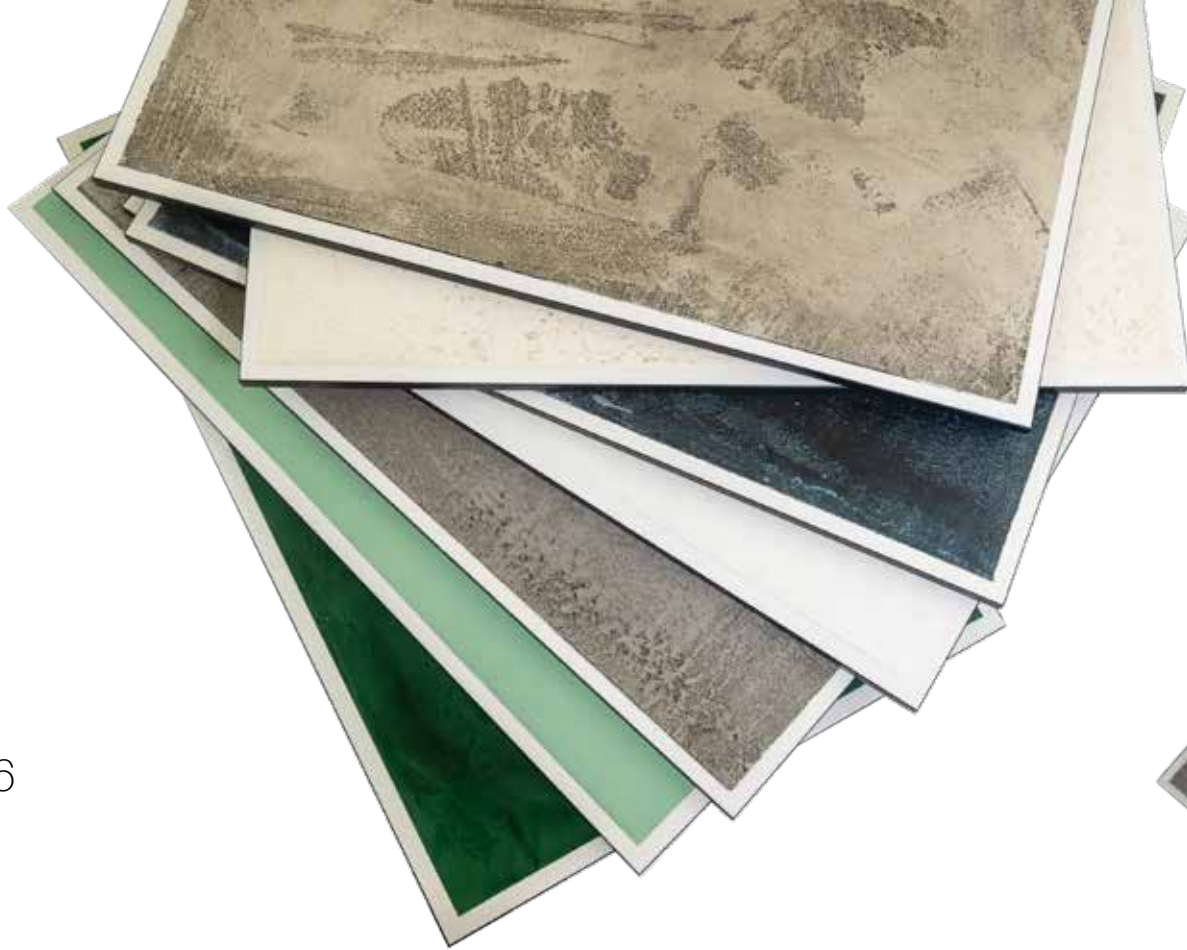


MADE IN ITALY

# SAMPLE PANELS

Twelve sample panels showing the main finishes and effects, which you can touch and observe closely.

*Dodici pannelli campione che mostrano le principali finiture ed effetti, che puoi toccare e osservare da vicino.*



36

## PANELS TOOLBOX

A proper container for carrying sample panels, consisting in an elegant and sturdy aluminum case, and twelve decorated panels inside. You can show your final customer the various combinations available, always within the reach.

*Un contenitore adatto per trasportare i pannelli campione, composto da un'elegante e robusta valigetta in alluminio, e dodici pannelli decorati al suo interno. Potete mostrare al vostro cliente finale le varie combinazioni disponibili, sempre a portata di mano.*

MADE IN ITALY

# EXOTIC

## LUXURY LINE COATING

by Gian Carlo Sagasti

#sexywalls



### **SHOWROOM**

2365 NW 70th Ave  
Miami, FL 33122 United States  
Lot# C13  
+1 (786) 817-2171  
exoticluxuryline@gmail.com

### **Distributed by**

OPERA SRL  
Via Giuseppe di Vittorio, 36  
26013 Crema CR • ITALY  
0039 348 26 04 939  
info@opera-srl.it

 **PRODOTTO ITALIANO**  
**ITALIAN PRODUCT**